

kev pab no ntshe koj yuav tau them mentsis ib qho nyiaj pab-them.



Tshawb Xyuas Mob Nkeeg

Tshawb xyuas mob nkeeg yog ib qho kev pab tshawb nrhiav rau iCare BadgerCare Plus cov tswvcuab hnoob nyoog qis dua ntawm 21 (tsis nyob rau kev pab them

ntawm BadgerCare Plus Core Plan cov tswvcuab.) Ntawm kev pab tshawb xyuas mob nkeeg nrog rau puvnpo kev tshawb ntawm tej mob nkeeg. Tus kws khomob xav ntsib cov hnoob nyoog qis dua 21 xyoo tsis tu ncu, tsis yog thaum uas lawv mob xwb.

Ntawm kev tshawb xyuas mob nkeeg yuav pab them rau cov nqi tu khomob rau tej kev mob txhawb pom thaum tshawbfawb xam nrog kev khomob, kho qhov muag, thiab khohniav. Ntawm kev tshawb xyuas mob nkeeg tshawb fawb xam nrog: keeb kwm kev mob nkeeg thiab kev loj hlob (xam nrog npaj ntsoov tos saib xyuas), txhaj tshuaj kom raws li hnoob nyoog thiab kuaj ntshav thiab zis (xam nrog ntshav muaj kua hlau li cas thiab haum rau lub hnoob nyoog).

Kev Thauj

Yog tias koj yog ib tug tswvcuab ntawm iCare BadgerCare Plus Standard Plan thiab koj nyob hauv Milwaukee cheebtsam, iCare yuav teem tsheb npav lossis tsheb ntiav rau koj kev mus ntsuam mob. Yog tias koj yog ib tug tswvcuab ntawm Standard Plan thiab nyob hauv Kenosha, Ozaukee, Racine, Sheboygan, Washington lossis Waukesha cov cheebtsam, hu rau ntawm koj cheebtsam chav txhawb zog lossis pab tib neeg txog tej lus teem txog kev thauj.

Kev thauj yam tsis-ceev tsis yog ib qho txiaj ntsim uas them yog tias koj yog ib tug tswv cuab los ntawm BadgerCare Plus Benchmark Lossis Core Plans.

Tsheb Thauj Khomob Tshwjxeeb (SMV)

Independent Care pab them kev thauj rau tsheb thauj khomob tshwjxeeb rau BadgerCare Plus Standard cov tswvcuab uas nyob hauv laub. Peb kuj yuav pab them qhov kev pab no rau lwm cov yog tias koj tus kws khomob nug txog nws.

Kev thauj yam tsis-ceev tsis yog ib yam txiaj ntsim yuav them rau cov tswvcuab ntawm Benchmark lossis Core Plans.

Tsheb Thauj Mob

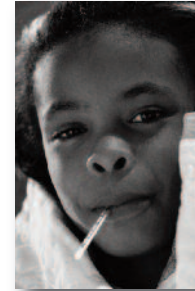
Independent Care pab them rau kev thauj mob rau tej kev muaj mob ceev tagnrho rau cov cheebtsam hauv peb thajtsam kev pab cuam. Peb kuj yuav pab them tej kev pab cuam no nyob rau lwm lub sijhawm, tiamsis cov tswvcuab yuav tsum tau kev tsocai rau txhua yam kev thauj uas tsis yog muaj mob-ceev.

Tswvcuab cov ntawv yuav tshuaj thiab qee yam khoom uas muag saum rooj tsis siv ntawv tshuaj yog npaj los ntawm Xeev, tsis yog iCare.

Txiaj Ntsim Chaw Muag Tshuaj

BadgerCare Plus cov tswvcuab kuj yuav tau txais cov ntawv yuav tshuaj tuaj natwm iCare cov kws khomob, cov tshwjxeeb lossis cov kws khohniav. Koj muaj peev xwm mus ntim tshuaj ntawm lub chaw muag tshuaj uas yogi b lub npaj pab rau BadgerCare Plus.

Tsuas yog qhia koj daim ForwardHealth ID rau ntawm lub chaw muag tshuaj thaum koj mus ntim koj cov tshuaj. Koj kuj yuav tau them nyiaj-pab lossis yuav tsis tau ntau hom tshuaj.



BadgerCare Plus



INDEPENDENT CARE HEALTH PLAN

1555 N. RiverCenter Dr., Suite 206

Milwaukee, WI 53212

www.icare-wi.org

1-800-777-4376

TTY 1-800-947-3529 or 7-1-1

www.icare-wi.org



iCare BadgerCare Plus yog dabatsi?

Tsim nyob 1994, iCare (independent care health plan) yog ib qho kev sib koom nruab nrab ntawm ib lub koom haum tau-tshaj peev sab kev mob nkeeg, Humana Wisconsin Health Organization, thiab ib lub koom haum tau tsis-tshaj peev, Milwaukee Center for Independence. Ob lub koom haum txiav txim siab los tsa ib feem kev pab kom muaj kev txhim kho rau kev zoo thiab npaj rau kev saib xuas rau cov neeg tsim nyog tau txais rau Medicaid.

Independence Care yog ib lub koomhaum ceev cia kev mob nkeeg (HMO) rau BadgerCare Plus. Thaum koj tso npe rau hauv BadgerCare Plus, koj yuav tau txais ib pob ntawv xa tuaj uas qhia koj txog cov HMOs uas muaj rau koj nyob cheebtsam ntawm koj.

BadgerCare Plus yog ib feem hauv Xeev/Tsoom fww kev pab uas pab rau kev them kev kho mob nkeeg rau cov tsev neeg hauv Wisconsin. Nws hloov ntawm lub dhau los AFDC-Medical, Healthy Start thiab BardgerCare cov kev pab. BadgerCare Plus muaj yam tseem ceeb txiaj ntsim kev pab rau kev khomob nkeeg: **Standard, Benchmark** thiab **Core**.

Ntawm **Standard Plan** yog rau cov tsev neeg uas tau nyiaj li ntawm lossis qis dua 200% feempua ntawm Tsoom fww them neeg pluag (FPL). Standard Plan cov tswvcuab tej zaum hais kom pab them mentsis cov nqi uas tau txais kev pab. Ntawm nqi pab-them pib li ntawm \$.50-\$3.00 ib zaug tau txais kev pab.

Ntawm **Benchmark Plan**, uas npaj rau txoj kev pab tsawg dua ntawm tus Standard Plan, yog rau cov tsev neeg uas tau nyiaj tshaj 200% feempua los ntawm FPL, thiab rau cov niam txiv uas ua haujlwm rau lawv tus-kheej thiab cov pab tu lwm tus. Benchmark Plan cov tswvcuab yuav tau kom them ib feem ntawm cov nqi tej kev pab cuam npaj pub rau lawv.

Ntawm **Core Plan** yog rau cov neeg laus uas tsis muaj menyuam yog ib qho kev nthuav kom dav los ntawm BadgerCare Plus kev pab cuam uas tsocai them khomob nkeeg rau cov neeg laus uas tsis tau txais lwm hom BadgerCare Plus Plan lossis Medicaid. Ntawm Core Plan them rau tej kev khomob yooj yim nrog rau kev xub pib

kho thiab kev tiv thaiv, tej tshuaj tsis nrov npe thiab qee hom tshuaj uas nto npe.

Kuv yuav tsonpe rau BadgerCare Plus licas?

Cov neeg tsonpe yuav tsum xa ib daim ntawm thov suam npe thiab tiav log mus rau hauv Xeev Wisconsin chav pab cuam kev khomob nkeeg mus ua daim ntawm thov ntawm BadgerCare Plus tej kev lis. Koj kuj mus sau tau ib daim ntawm thov saum online ntawm access.wisconsin.gov, teem ib qho kev sib tham tim-ntsej-tim muag ntawm koj cheebtsam/chav ua hauj lwm rau pawg neeg, xa daim ntawv thov mus lossis hu xovtooj mus tham nrog. Muaj lus nug txog ntawm daim ntawv thov, nug rau qhov chaw ua haujlwm ntawm koj lub zos, hu hauv Xeev kev pab tswvcuab feem kabkub badgercareplus.org.



Leej twg thiaj tsimnyog tau txais iCare BadgerCare Plus?

Ntawm iCare BadgerCare Plus yog muaj rau cov menyuam hnoob nyoob qis dua 19 xyoos, cov pojnian cev xeeb menyuam, cov niam txiv thiab cov tu ntawm cov menyuam qis dua 19, cov hlus nyob hauv tsev tu menyuam ntsuag, cov tsev neeg uas nyob liajteb, cov tsev neeg ua haujlwm rau tus-kheej thiab cov tsev neeg uas tau nyiaj-tsawg lawv tsis muaj kev tuav pov hwm rau kev khomob. Txuas ntxiv mus, ib txhia neeg laus uas tsis muaj menyuam uas tau nyiaj tsawg lossis nkag tsis tau los ntawm cov neeg ua haujlwm-txais kev tuav pov hwm rau kev khomob kuj muaj feem txais los ntawm Core Plan.

Peb cov chaw pabcuam yog Kenosha, Milwaukee, Ozaukee, Racine, Sheboygan, Washington thiab Waukesha cheebtsam.

Tej Kev Them Los Ntawm iCare BadgerCare Plus

Kev Nyuaj Siab Thiab Quav Yeeb Tshuaj

Independent Care npaj pab rau kev nyuaj siab thiab quav yeeb tshuaj (tshuaj thiab dejcawv) tej kev pab cuam rau txhua tus tswvcuab.

Pab Cuam Rau Kev Txiaiv Luam Yeeb

Pab cuam rau kev txiaiv laum yeeb yog npaj pab rau xwslis mus ntsib tom chaw ua hauj lwm thiab thaum tus neeg quav yeeb tshuaj tuaj kho tsis pw hauv tsev khomob thiab pab rau tej kev nyuaj siab.

Kev Npaj Homphiaj Pab Rau Tsev Neeg

Independent Care npaj kev pab ua raws li tsev neeg tej homphiaj nyiam rau txhua tus uas yog cov tswvcuab. Nov, xam nrog cov tsis tau muaj hnoob nyoog. Peb yuav pab koj xaiv ib tug iCare kws khomob pab npaj rau tsev neeg tejzaum nws yuav txawv tus kws khomob tus xub thawj.

Peb xav kom cov tswvcuab tau txais kev npaj homphiaj rau tsev neeg los ntawm ib tug iCare kws khomob. Li ntawd peb thiaj muaj peev xwm tuav tag nrho koj tej kev khomob nkeeg kom zoo dua. Tsoom fww txoj cai cia cov tswvcuab ua cov xaiv lawv cov uas npaj homphiaj pab rau lawv, nrog rau cov kws khomob thiab cov chaw tshuaj mob rau tsev neeg, kev tu rau kev xeeb menyuam thiab tej cuab yeej. Nyob rau hauv iCare BadgerCare Plus, koj yeej muaj peev xwm mus rau lub chaw tshuaj mob uas txais daim ntawv ForwardHealth ID txawm yog tias ntawm lub chaw tshuaj mob ntawd tsis yog ib feem ntawm iCare.



Kev Pab Tu Hniav

Independent Care npaj rau txhua yam kev pab tu hniav uas them los ntawm Medicaid nyob hauv Kenosha, Racine thiab Waukesha cov cheebtsam, tiamsis cov tswvcuab yauv tsum mus rau ntawm ib tug iCare kws kho hniav.

Cov tswvcuab uas nyob hauv Ozaukee, Sheboygan lossis Waukesha cov cheebtsam tseem yuav txais kev pab them hauv iCare BadgerCare Plus. Txawm li ntawd los, koj kev pab tu hniav yuav yog npaj los hauv Xeev, tsis yog iCare.

Kev Khomob Tig Pobtxha

Cov tswvcuab kuj yuav tau txais kev khomob tig pobtxha los ntawm tus kws khomob tig pobtxha uas kam txais koj ntawv Forward Health. Koj kev khomob tig pobtxha yuav yog npaj los ntawm Xeev,tsis yog iCare. Thaum koj siv cov